

# Features



**Lobby**



**My Tickets**



**Favorites**

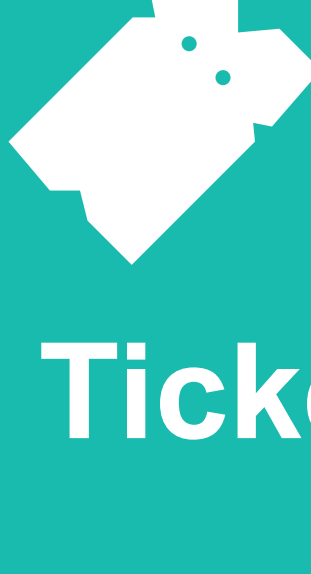


**Profile**



# Lobby

In this section you can complete your tickets purchase. Please go to the **How to play** document to get the complete information of this section.

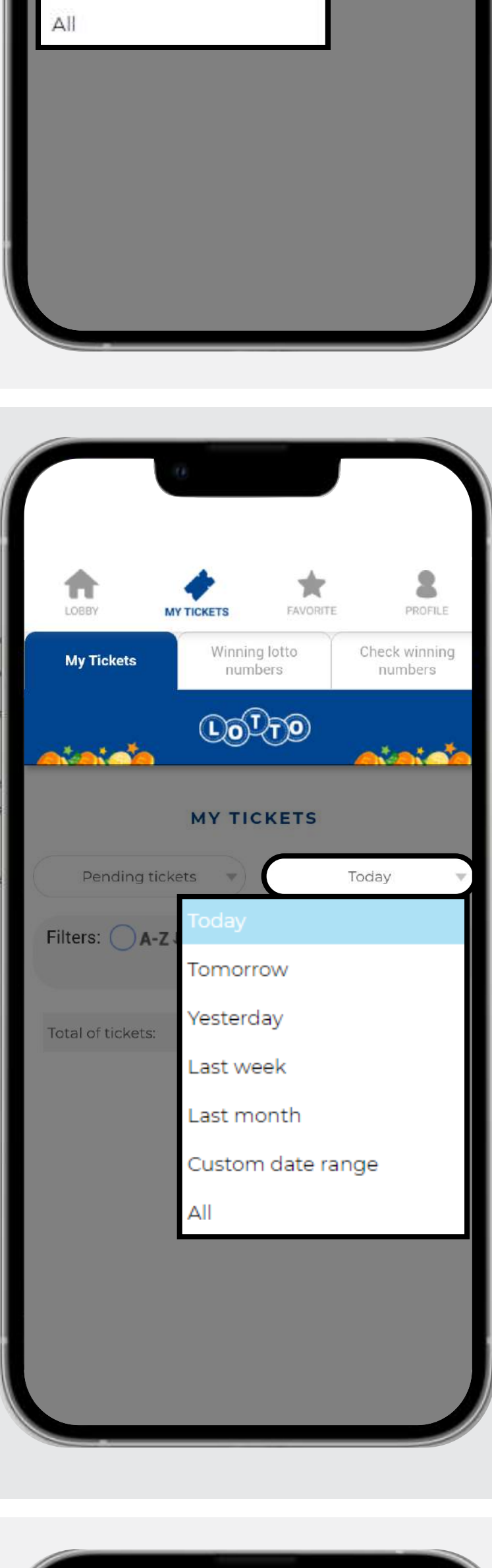


# My Tickets

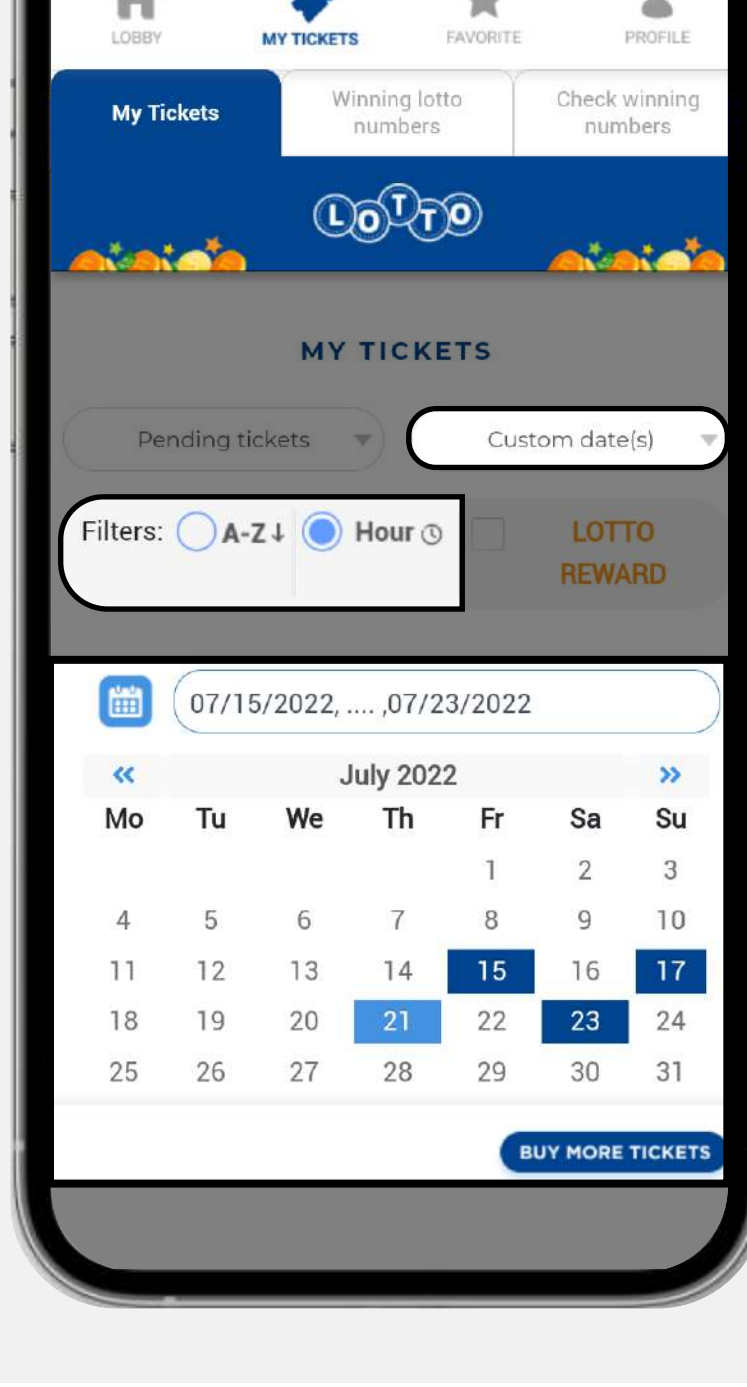
In this section you can view your tickets, either pending or from past drawings. You can also check what numbers came out on previous lottery drawings, looking by state or by combination.

## My Tickets tab

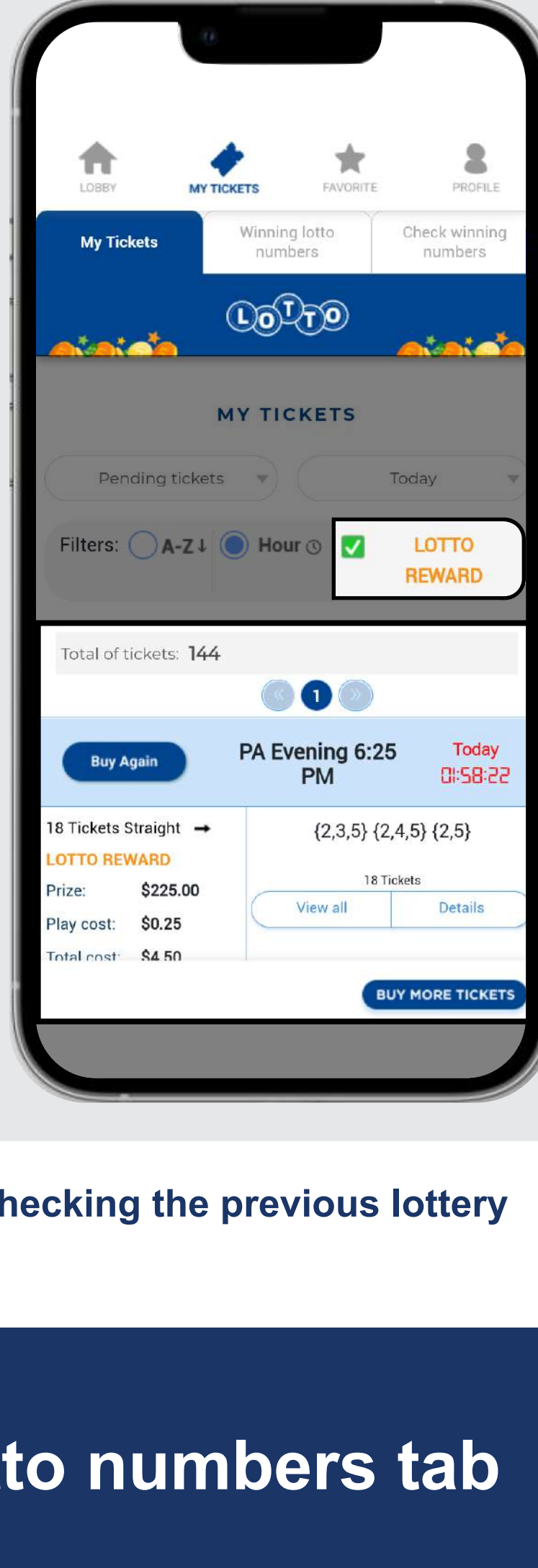
Select the status of the ticket(s) you are looking for.



Choose the date it takes or took place.



You can custom the date(s) search and use the filters to sort the results in alphabetical order or by drawing time.



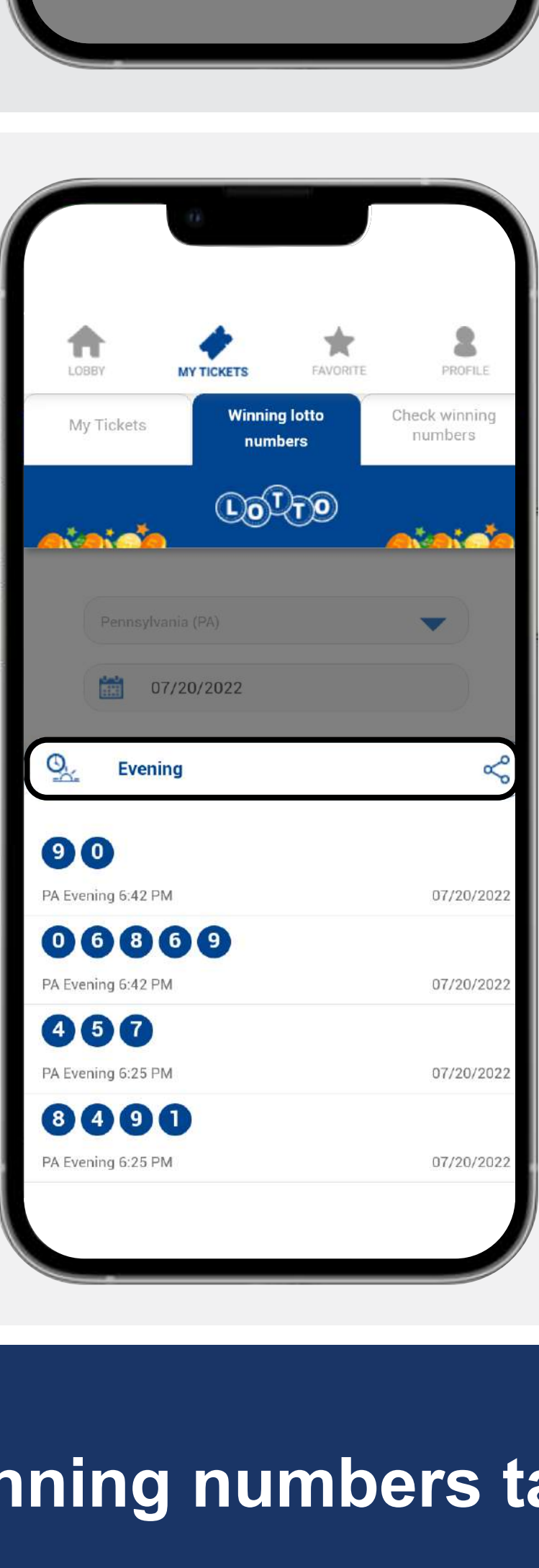
Make sure to click on the "Lotto Reward" checkbox, if the ticket(s) you are looking for were bought using your reward balance if not, be sure that the Lotto reward box is not marked with a green check.



There are two ways of checking the previous lottery winning numbers:

## Winning lotto numbers tab

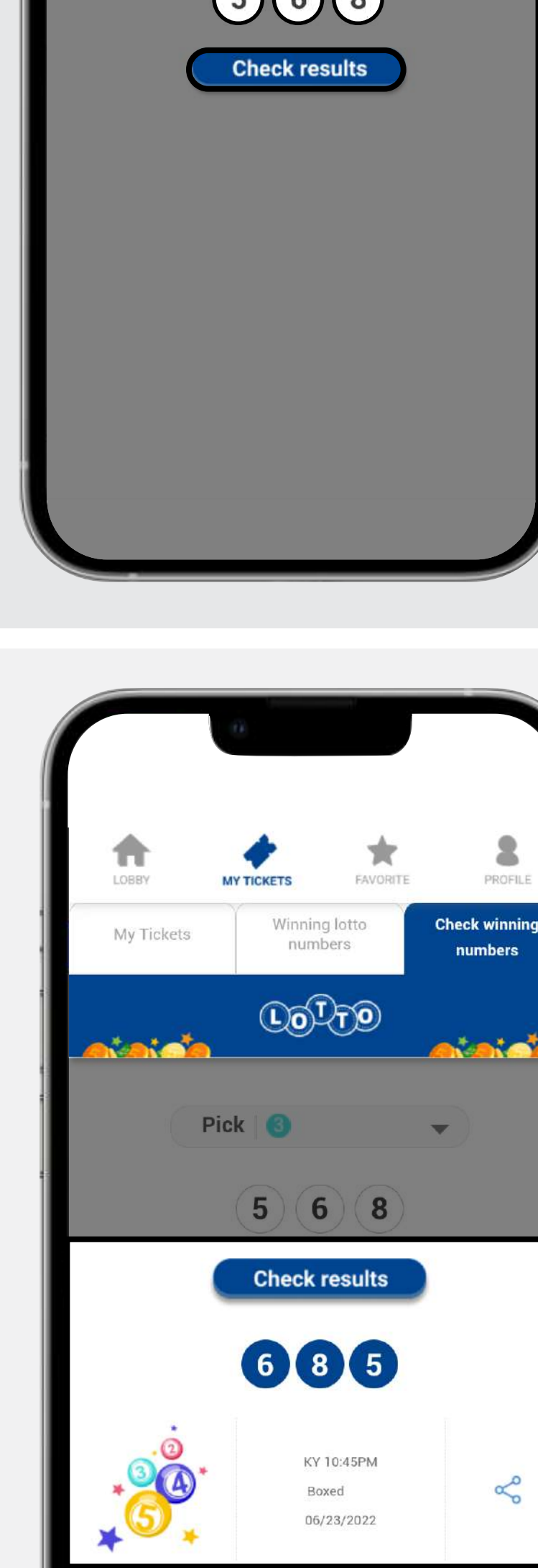
Select the state.



Choose the date (last 30 days only).

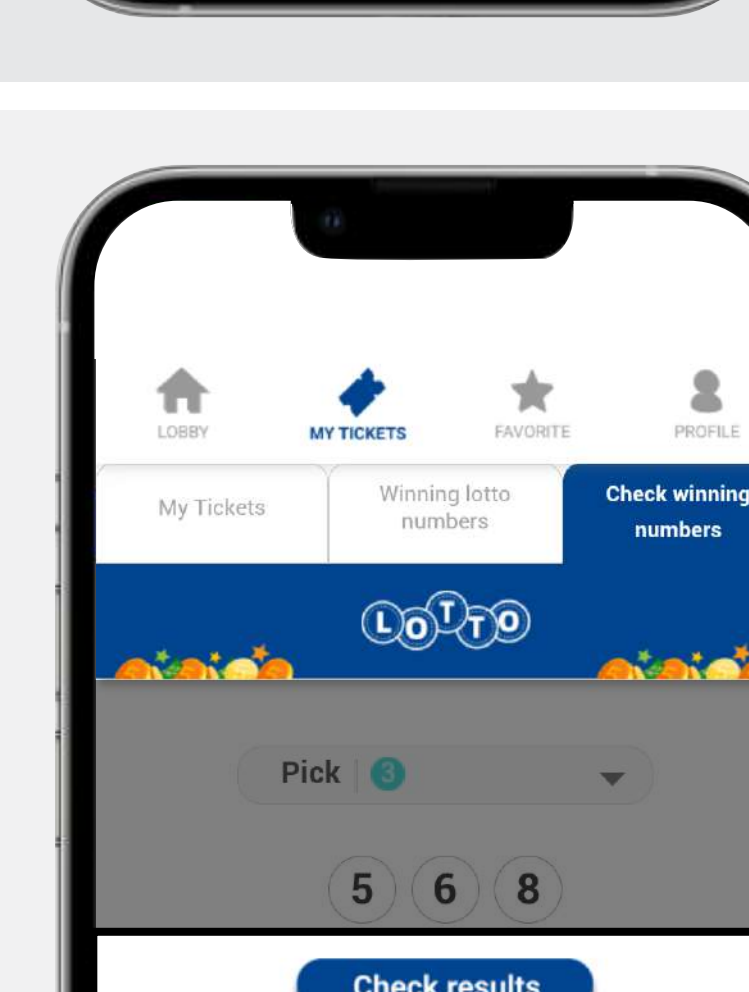


You'll see the winning numbers for the state and the date selected.

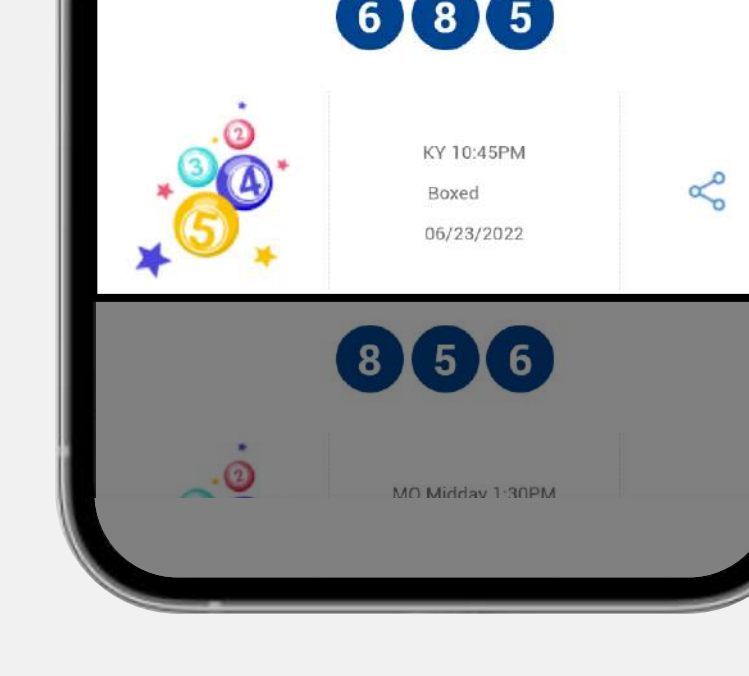


## Checking winning numbers tab

Select the type of drawing.



Type the numbers you want to check.



You can see where that combination has won in the last 30 days.

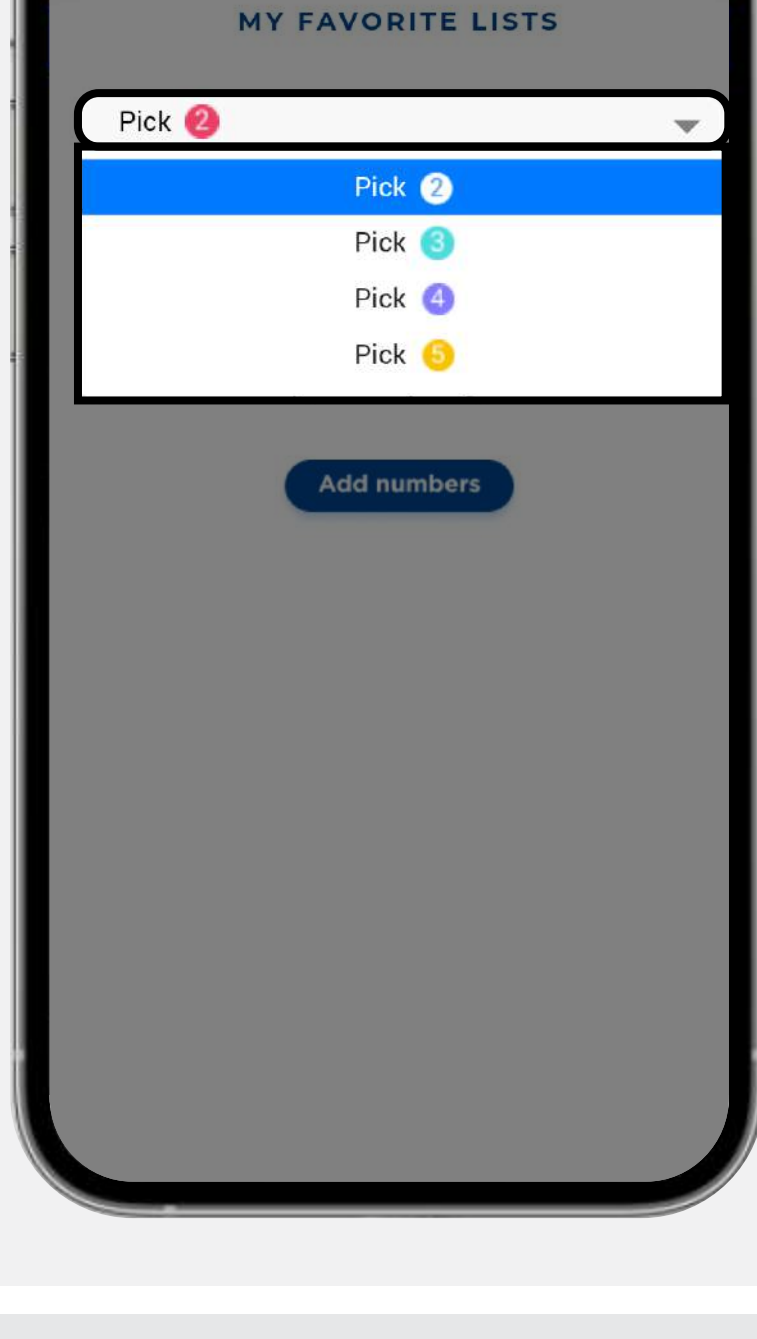




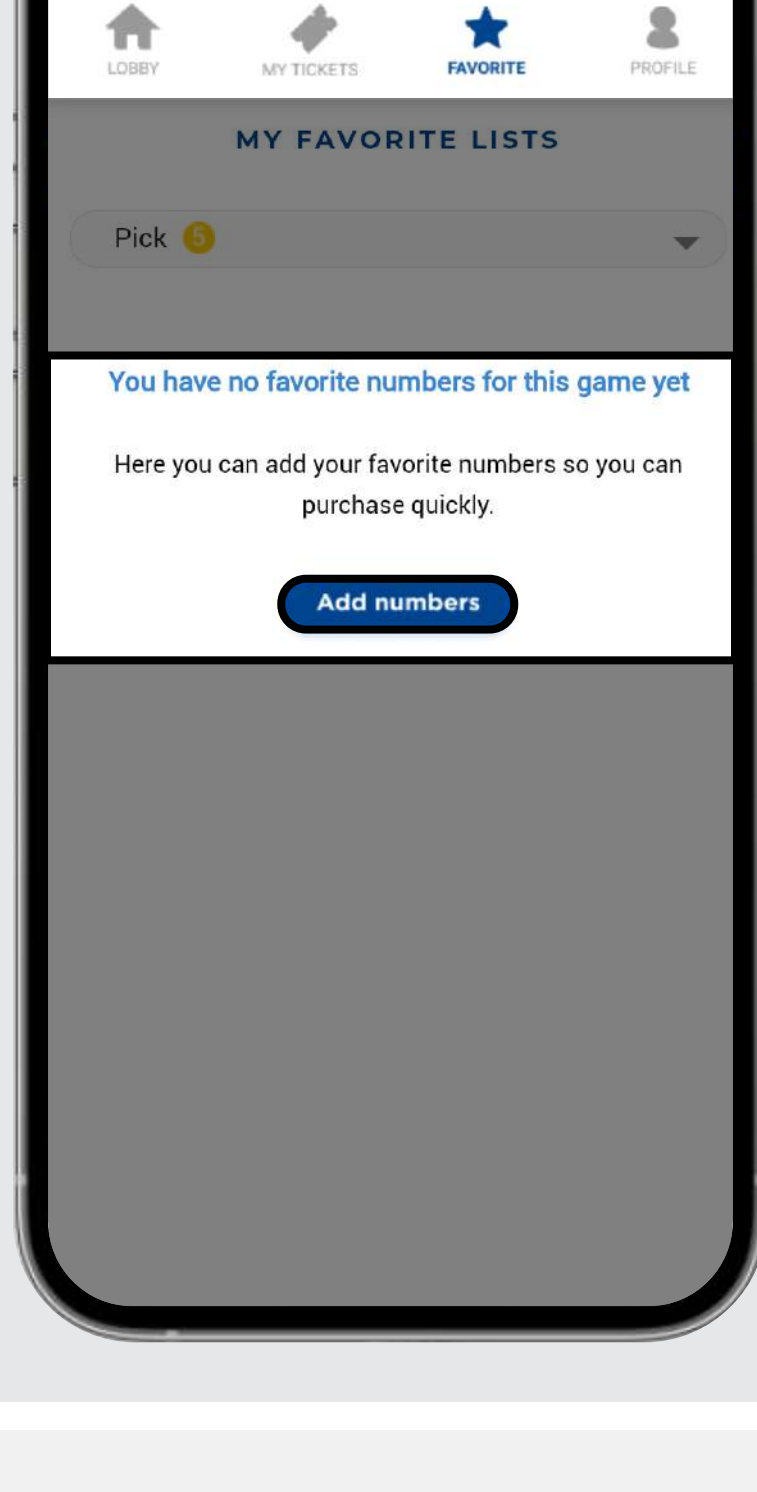
# Favorites

In this section you can manage your lists of favorite numbers to play them quickly any time you want.

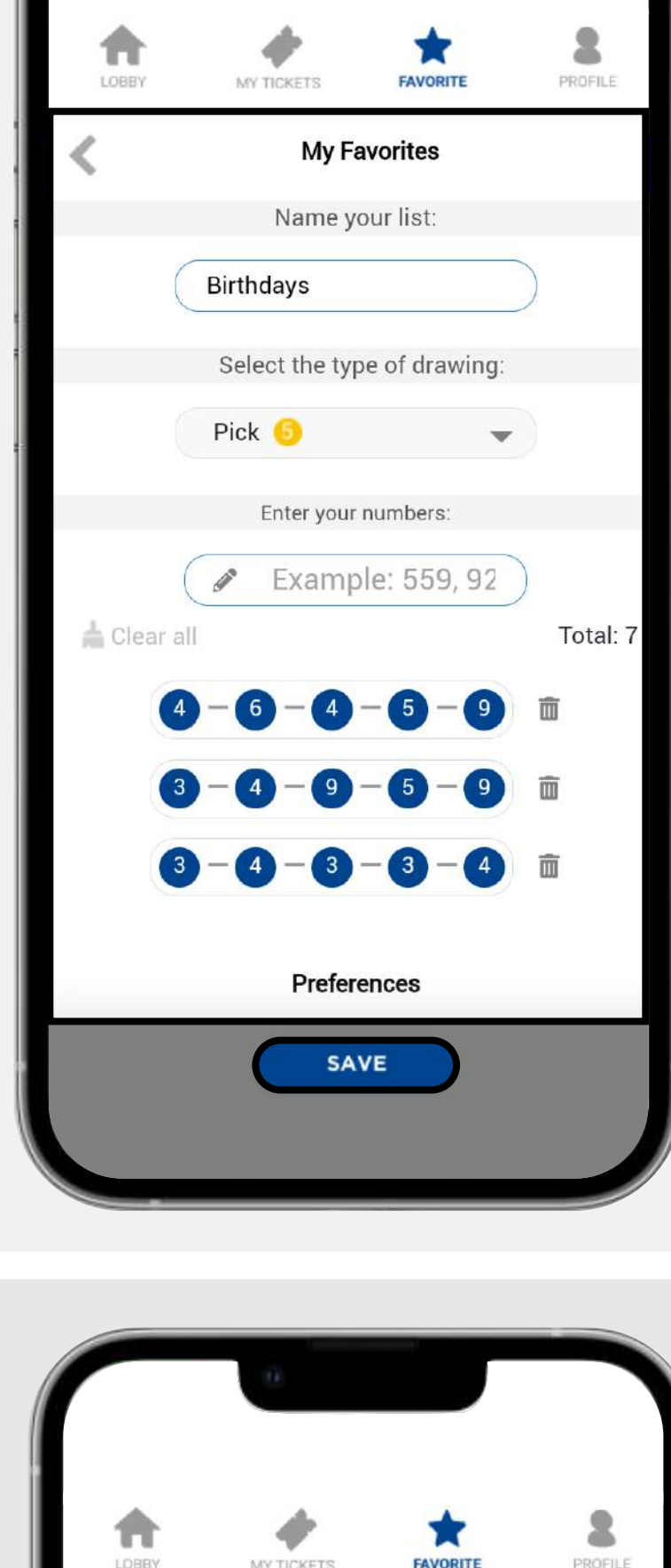
Choose the type of drawing you want to work with for your list; Pick 2, Pick 3, Pick 4 or Pick 5.



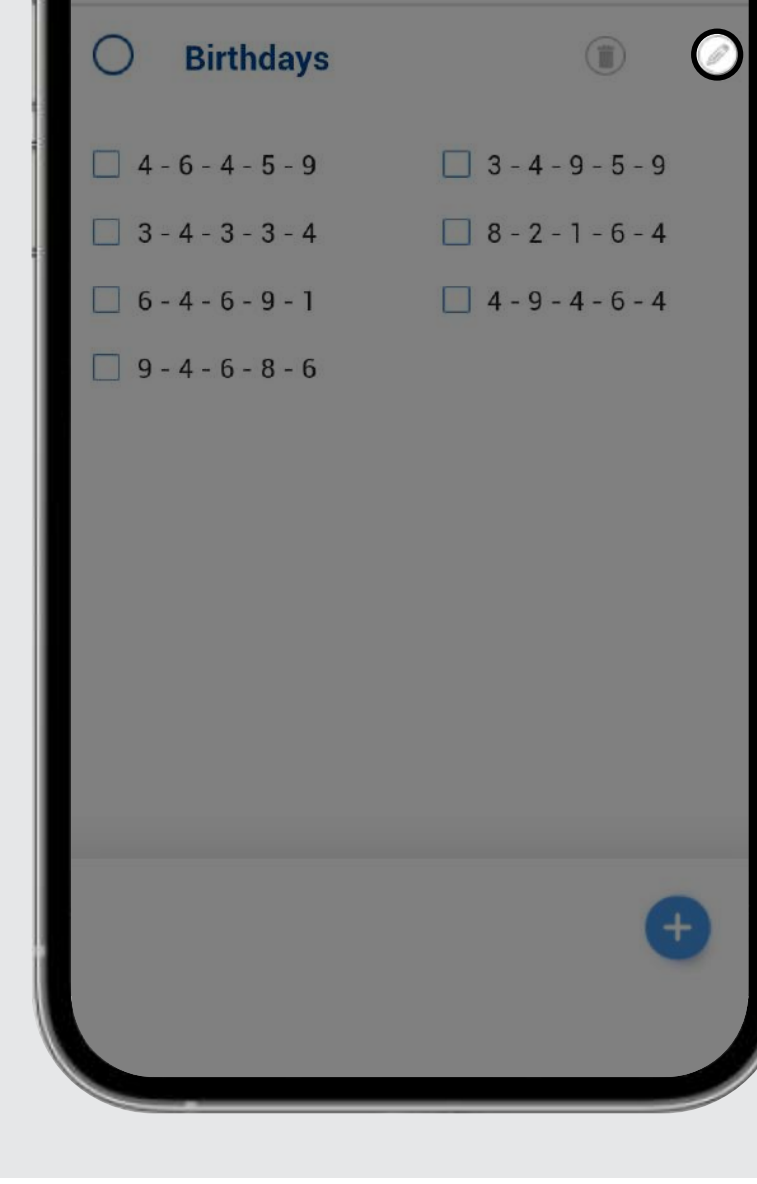
Click on "Add numbers" to **create your first list**.



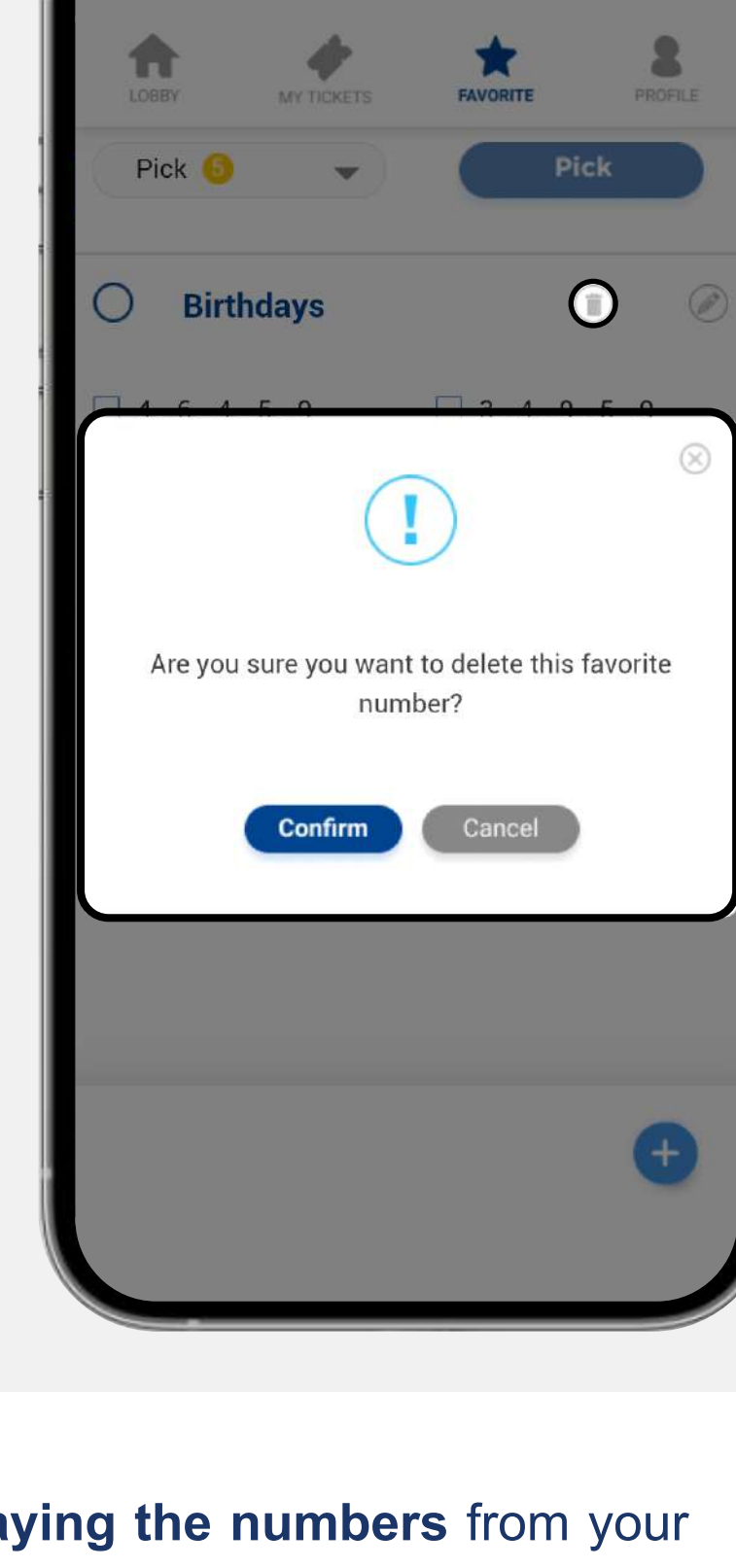
Complete the list with the information requested and then click **"Save"**.



Click on the pencil to **change the name, add or remove combinations** of an existing list.

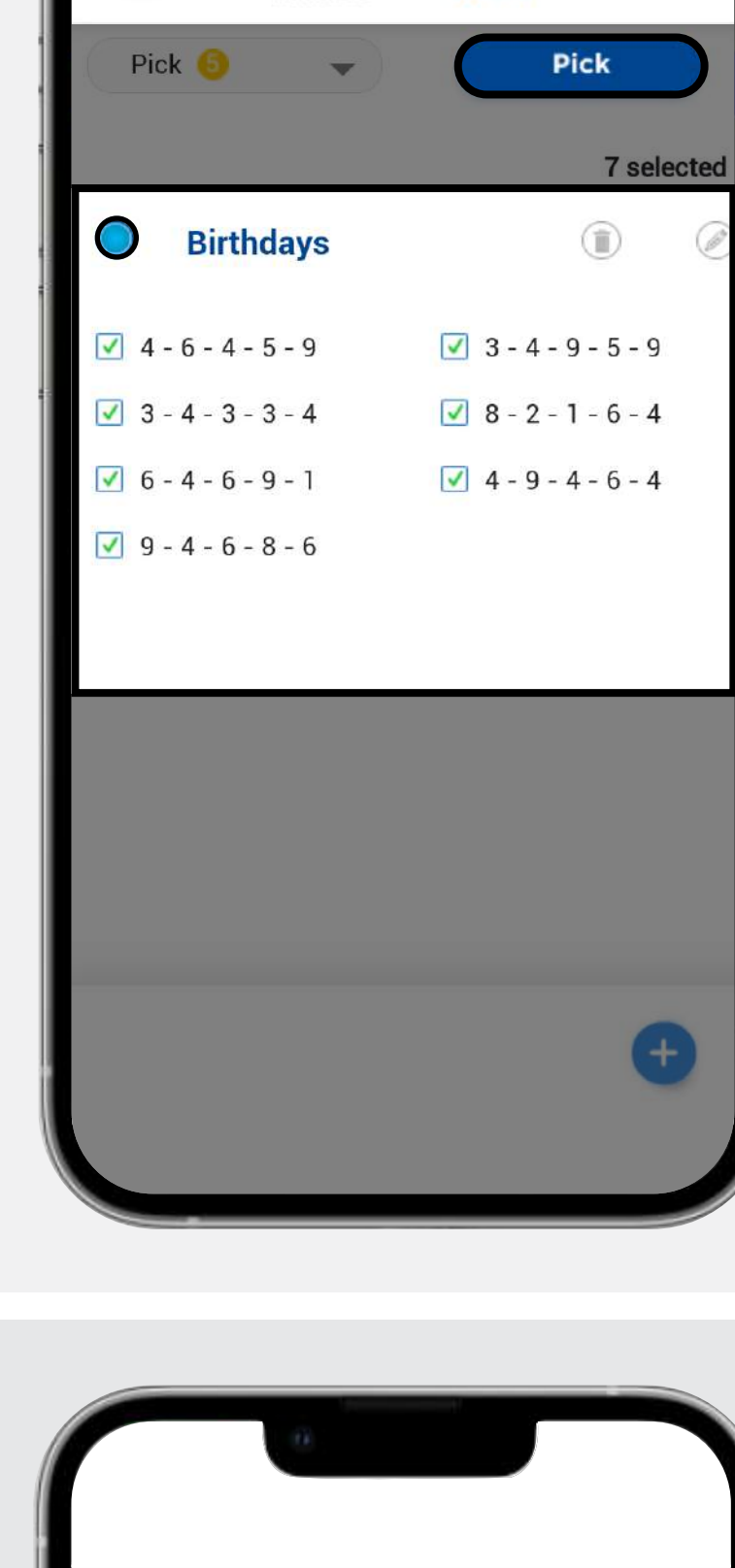


Click on the trash bin to **delete a list** permanently after your confirmation.

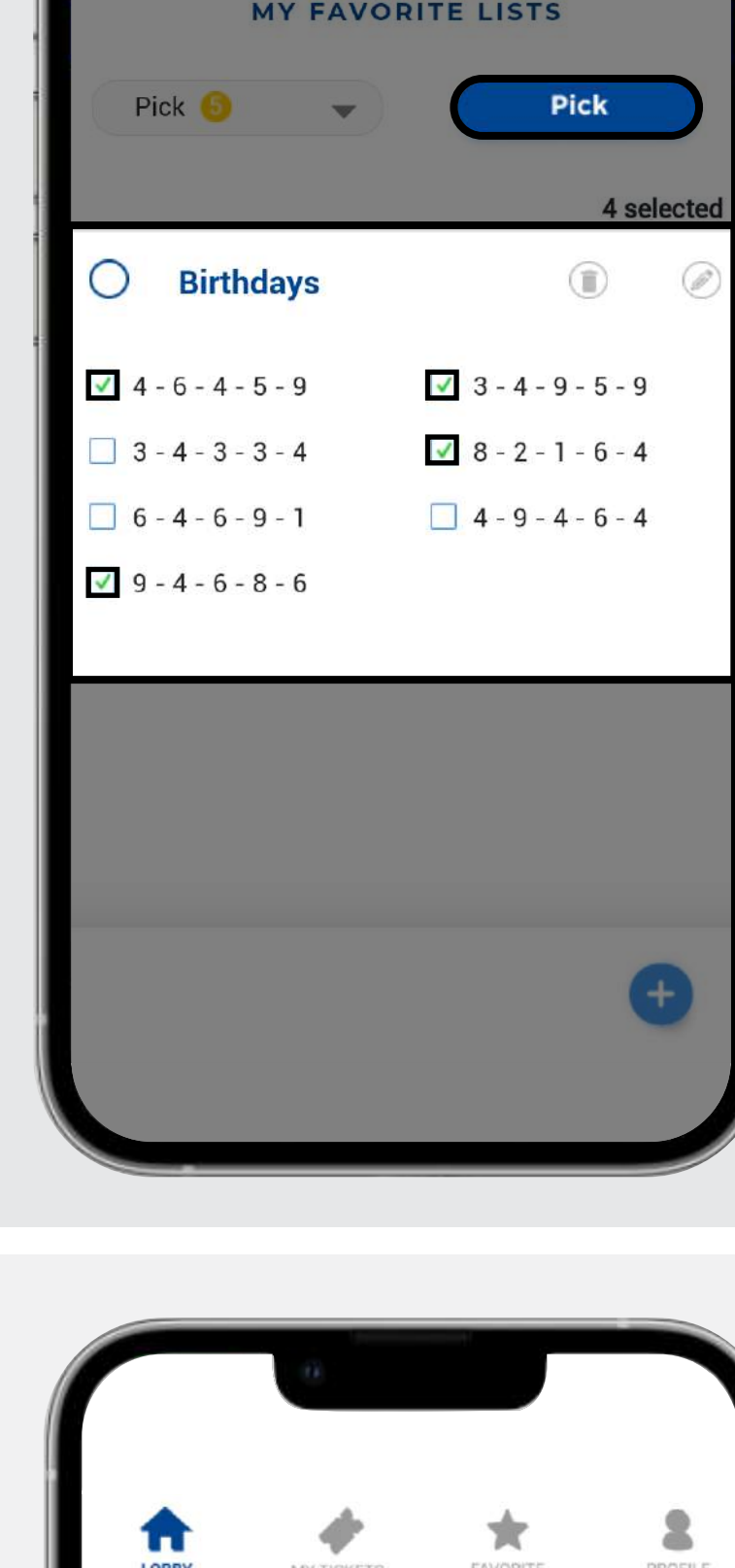


You have 2 ways of **playing the numbers** from your favorite list:

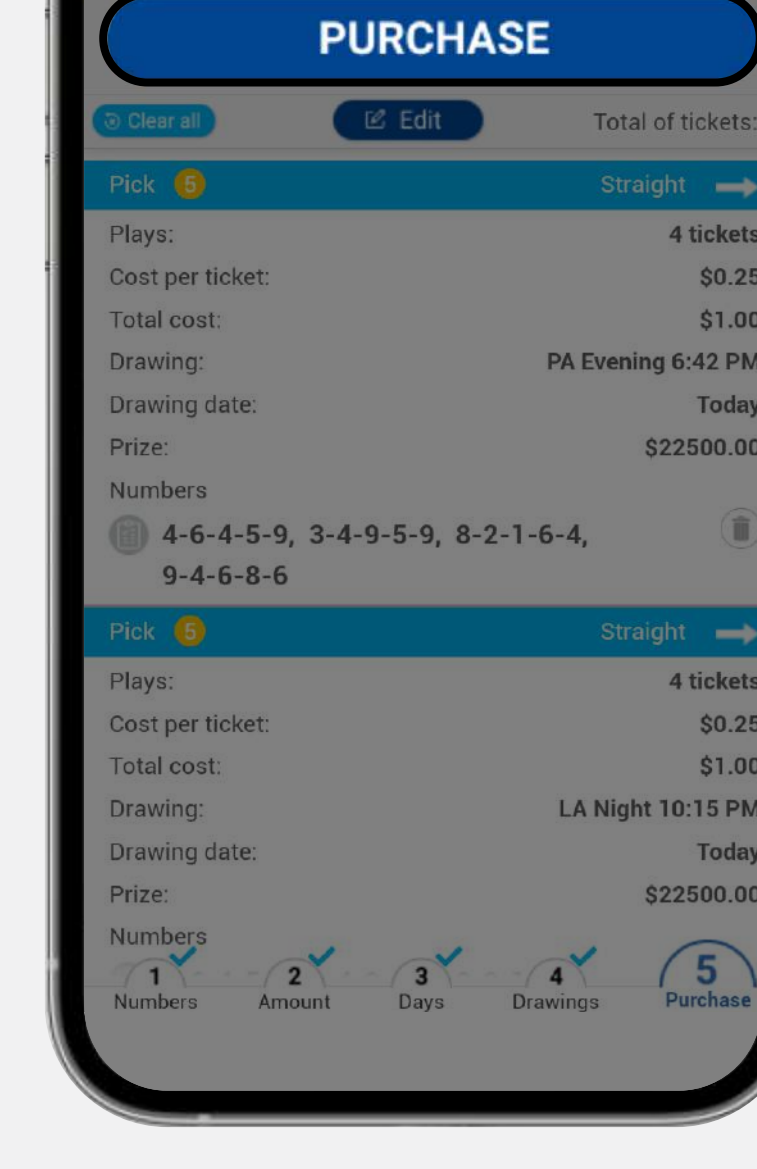
Click on the circle to play all the combinations from that list, then click on **Pick** to continue with the selected list.



Click on the individual combinations within a list to play some of them, then click on **Pick** to continue with the selected numbers.



You'll be redirected to the **Purchase** step. Double check your numbers and complete your purchase. **Please keep in mind that all lotto tickets are final.**





# Profile

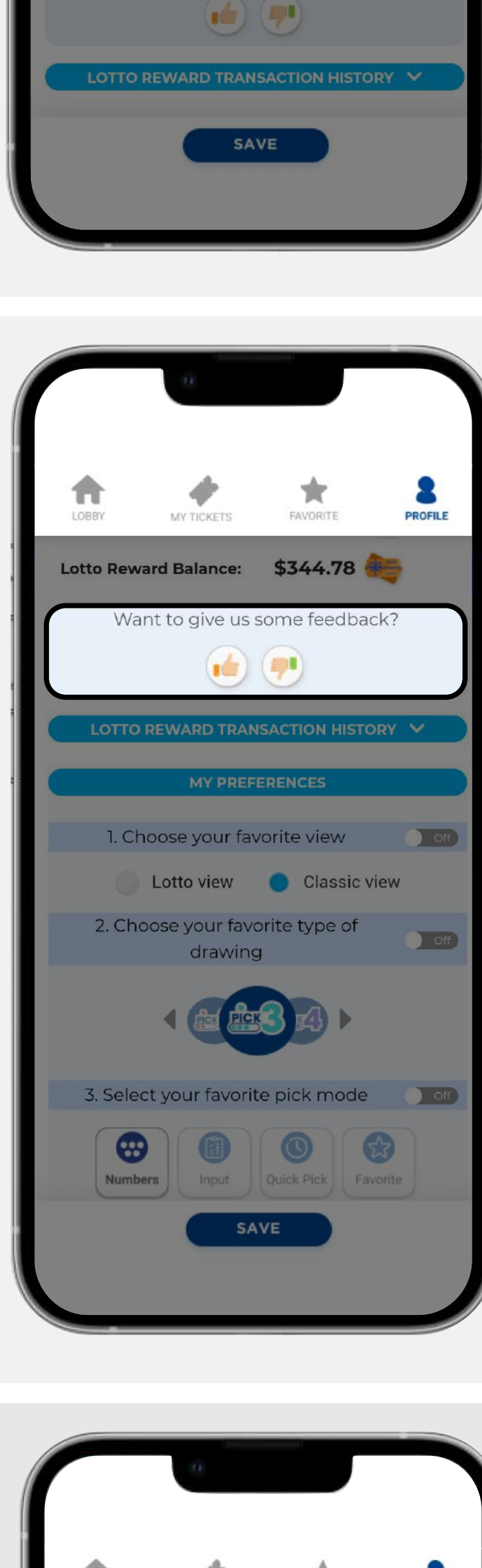
In this section you can customize your profile, provide us feedback and set your preferences to enjoy the lotto room.

## My Profile

### My Profile

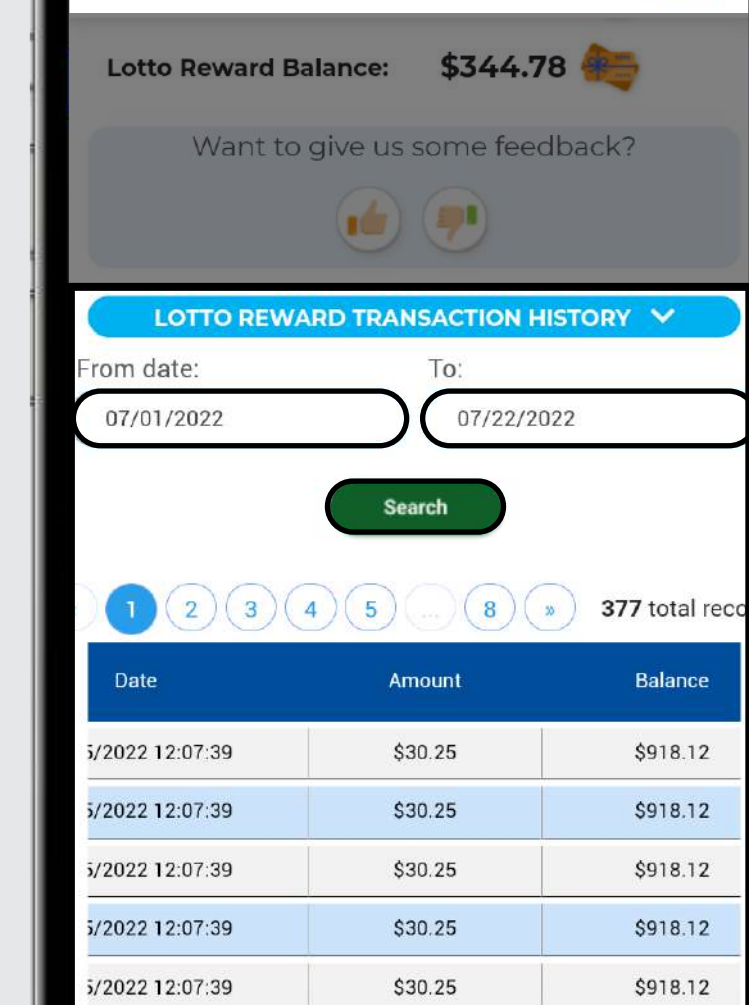
Click the little clip to upload a **profile picture**. Please note it will only be displayed after it's been approved by our staff.

Enter your nickname.



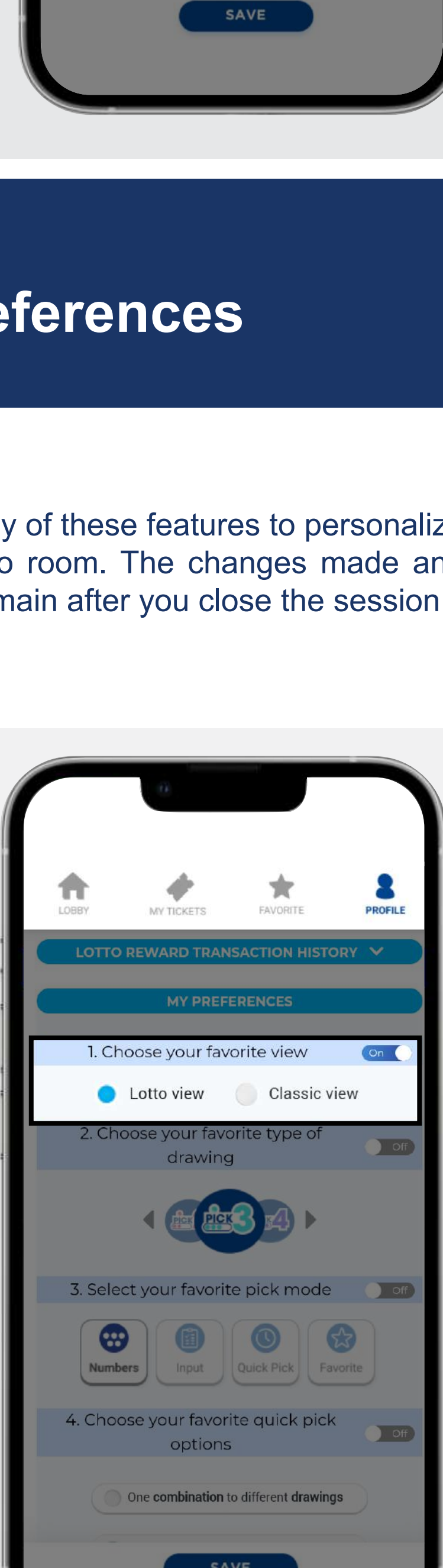
### Give us Feedback!

Click on either thumbs up or down, then you can choose from the defaulted messages or write your own.



### Lotto reward transactions

Click on the down arrow, choose the date range to display your transactions and then click "Search" to see your tickets bought with the lottery reward.

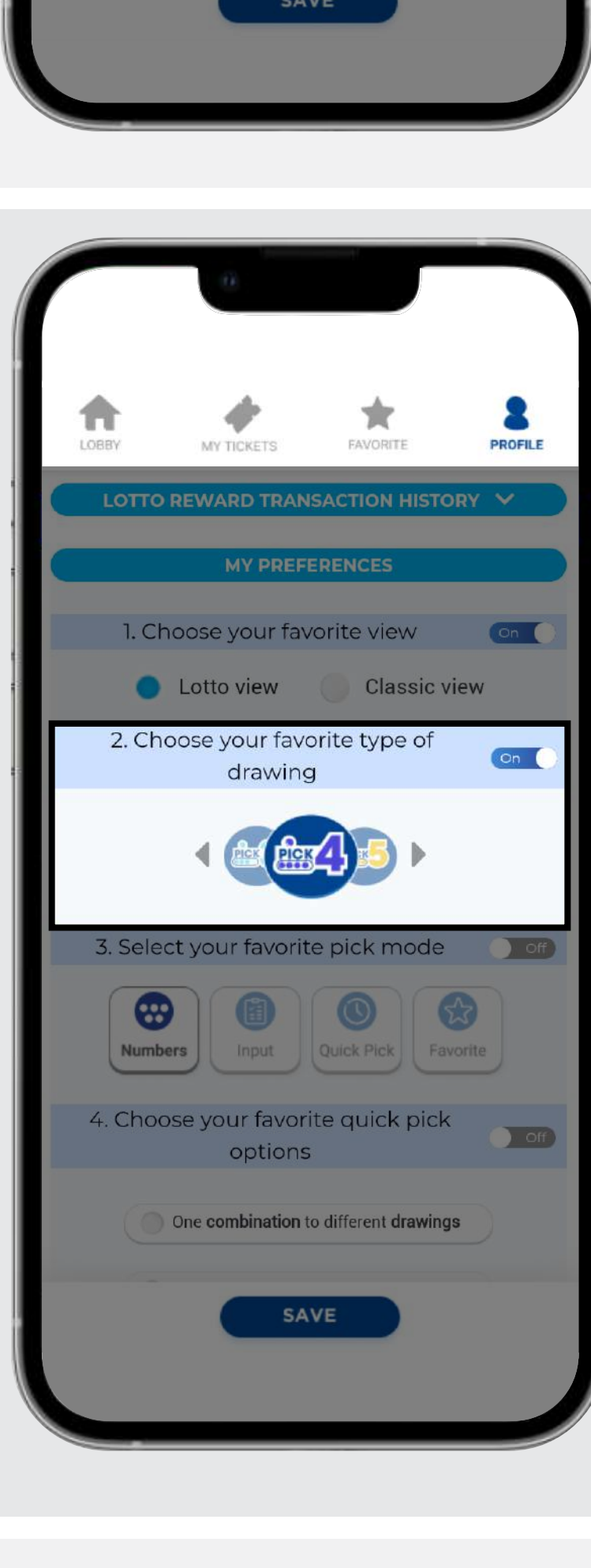


## My Preferences

You can turn **ON** or **OFF** any of these features to personalize your experience in the lotto room. The changes made and saved in this section will remain after you close the session.

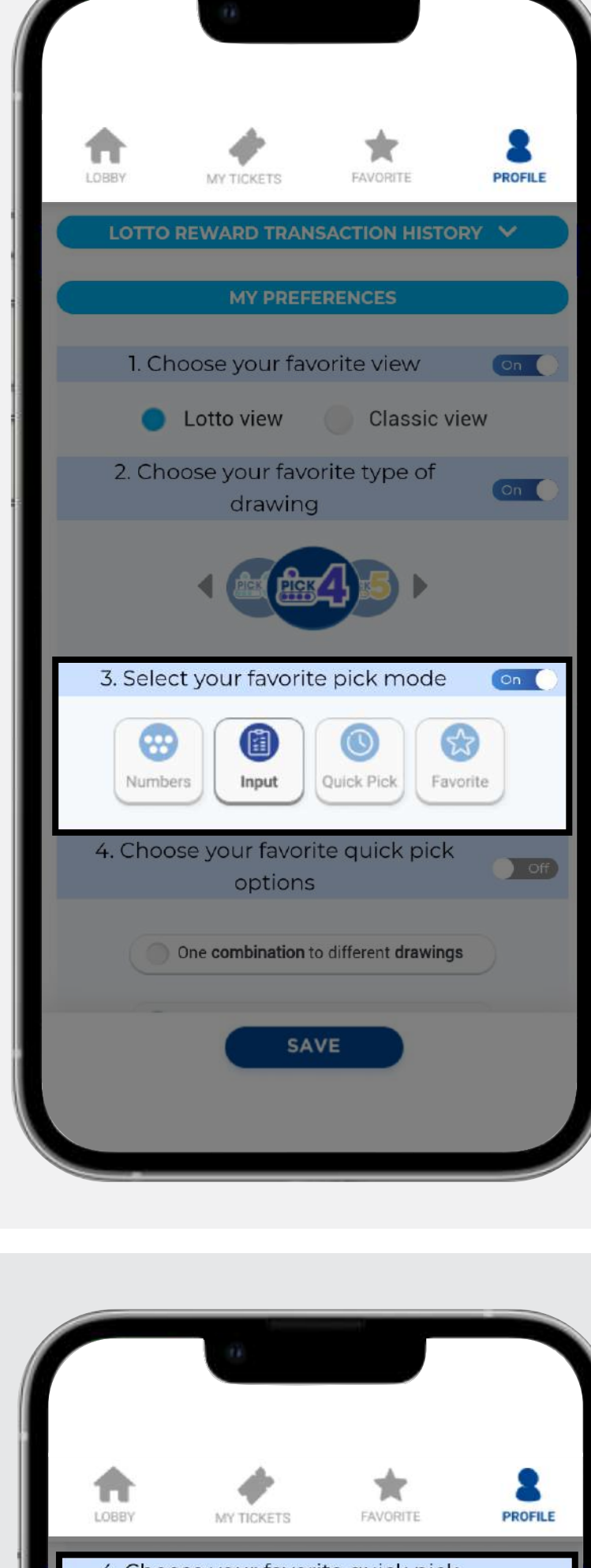
### 1. Choose how the lottery room is shown as (Lotto view or Classic View).

Choose how the lottery room is shown as (Lotto view or Classic View).



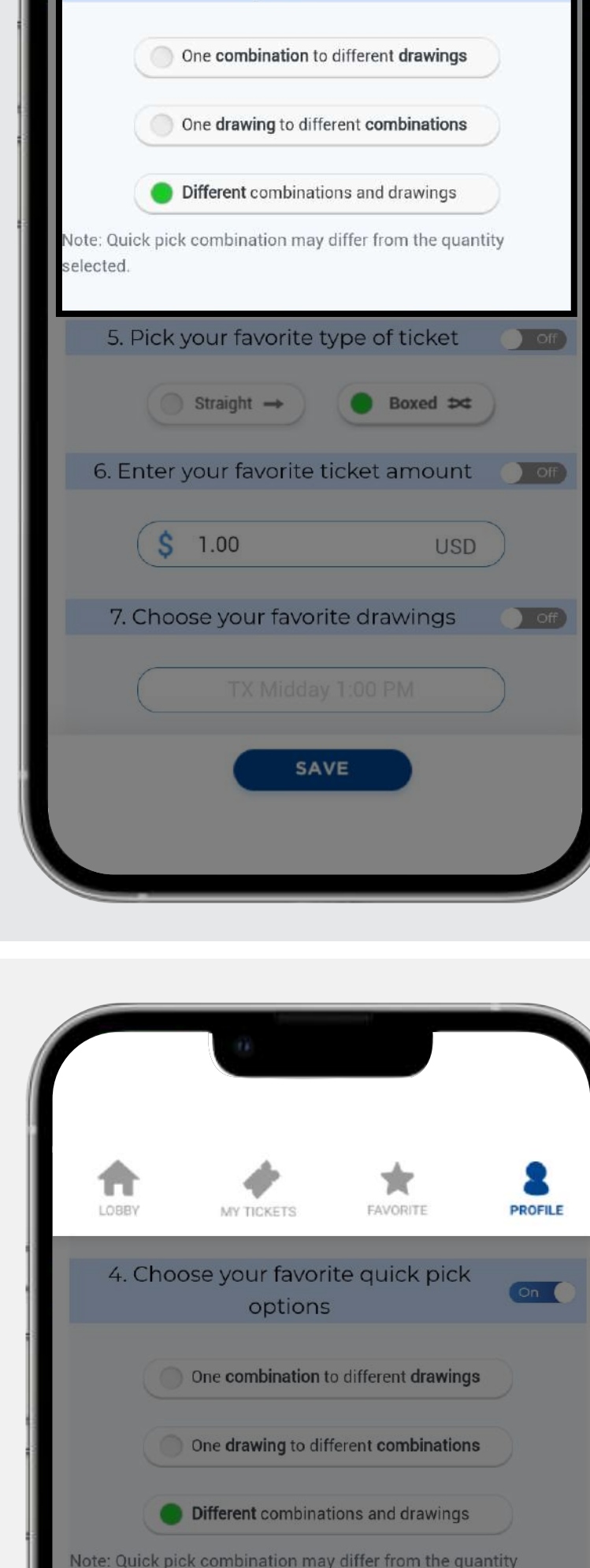
### 2. Choose which type of drawing you prefer to start on.

Choose which type of drawing you prefer to start on.



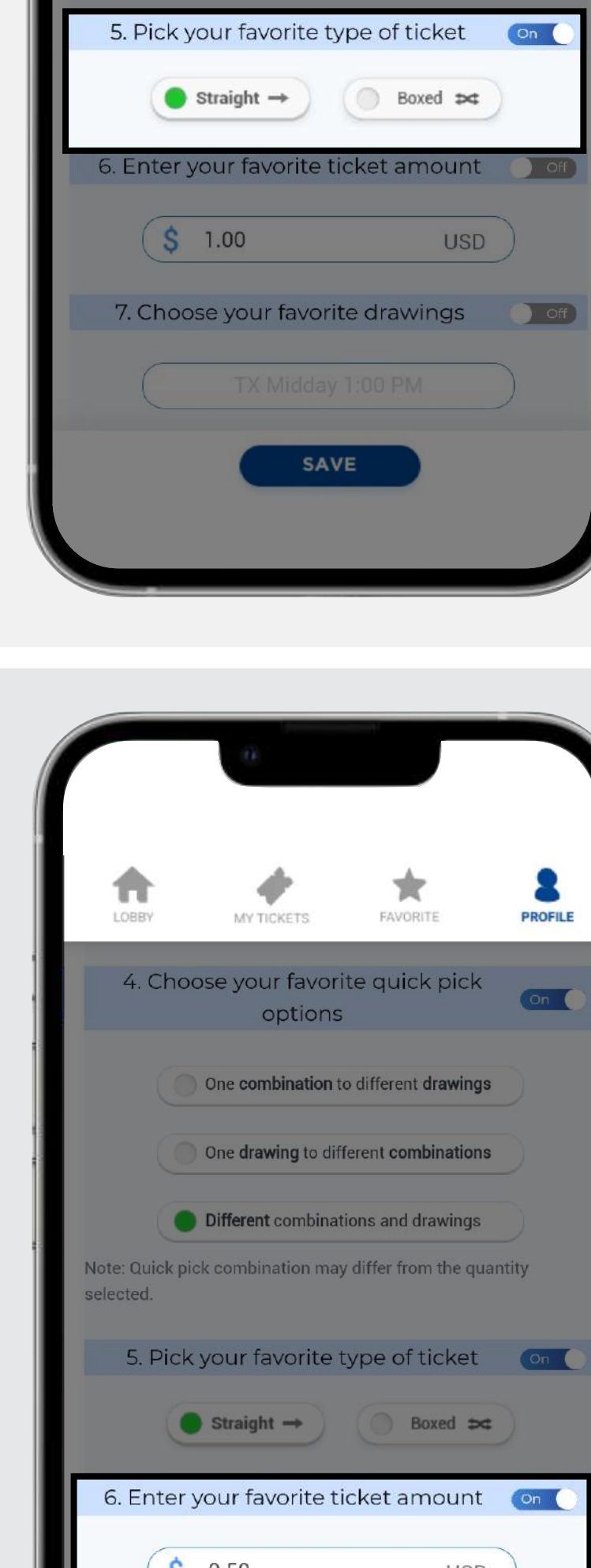
### 3. Choose your preferred pick mode to enter your numbers.

Choose your preferred pick mode to enter your numbers.



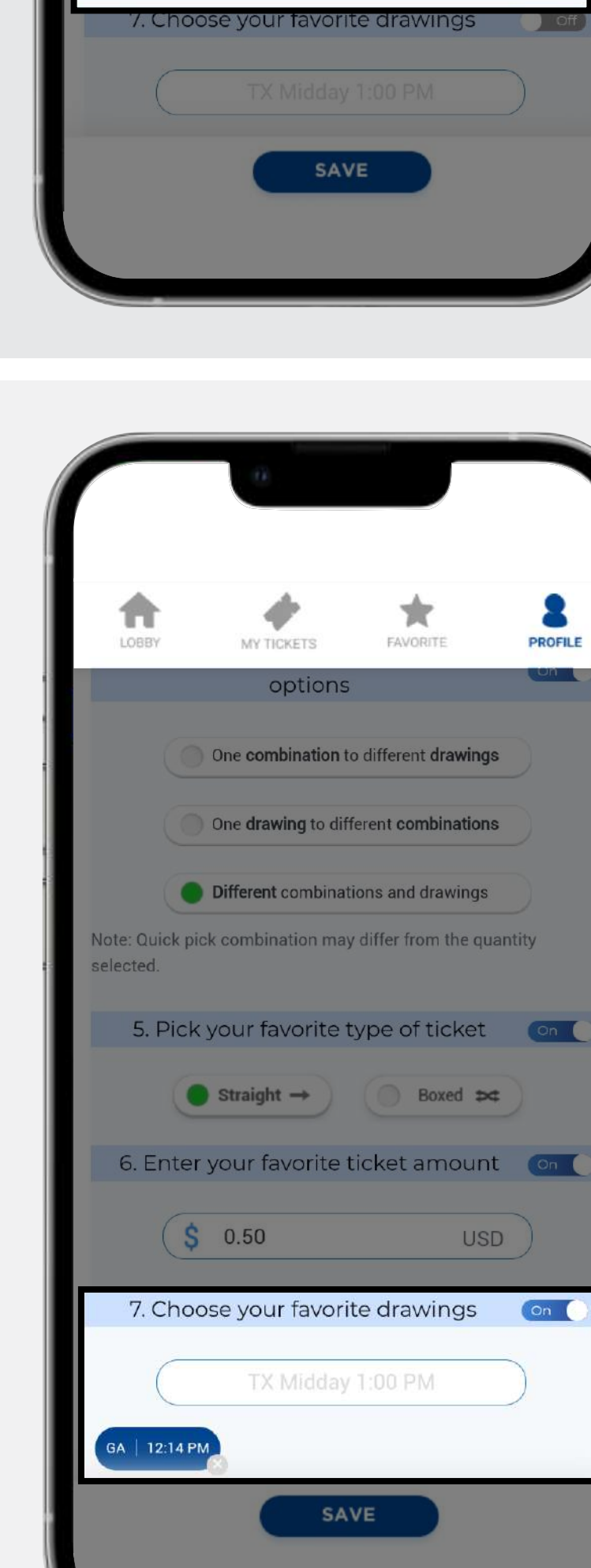
### 4. Choose how the "Quick Pick" option randomizes your numbers and drawings.

Choose how the "Quick Pick" option randomizes your numbers and drawings.



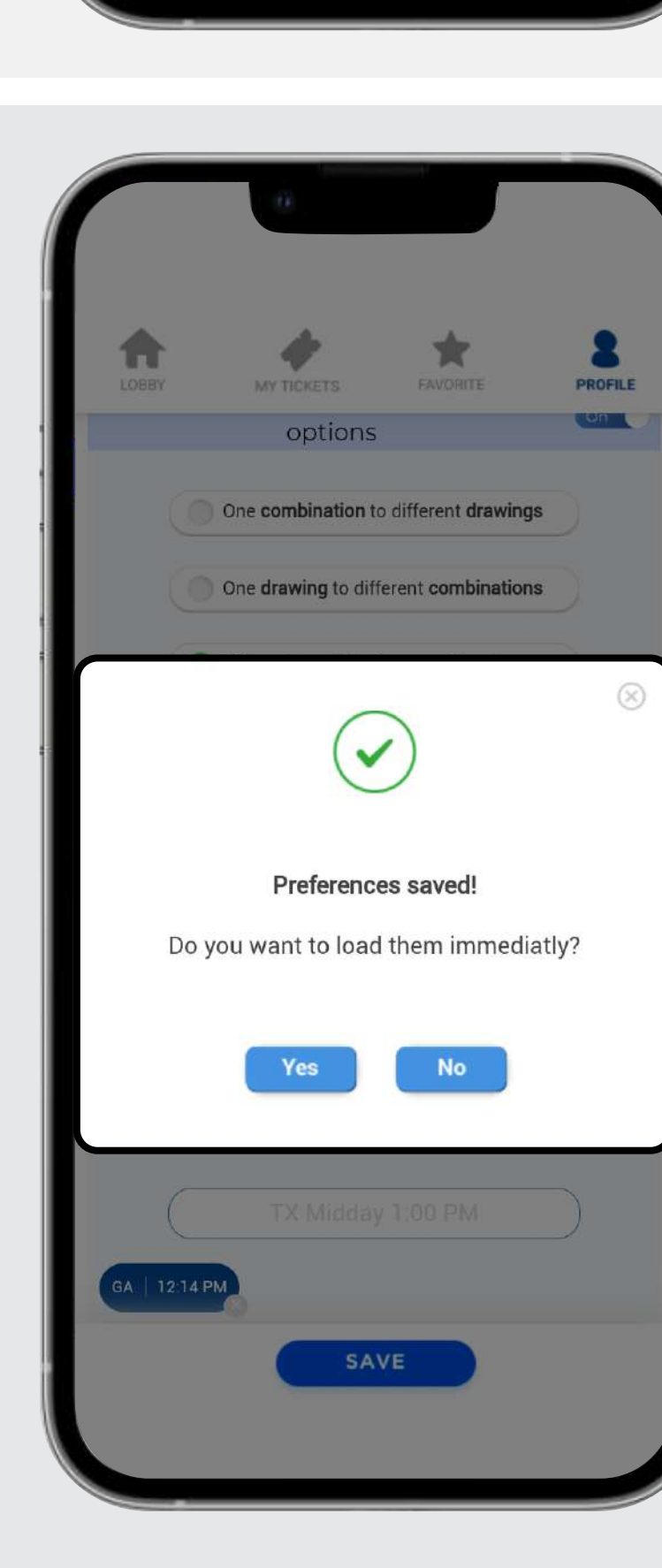
### 5. Pick your favorite type of ticket to prefer to start on.

Pick your favorite type of ticket to prefer to start on.



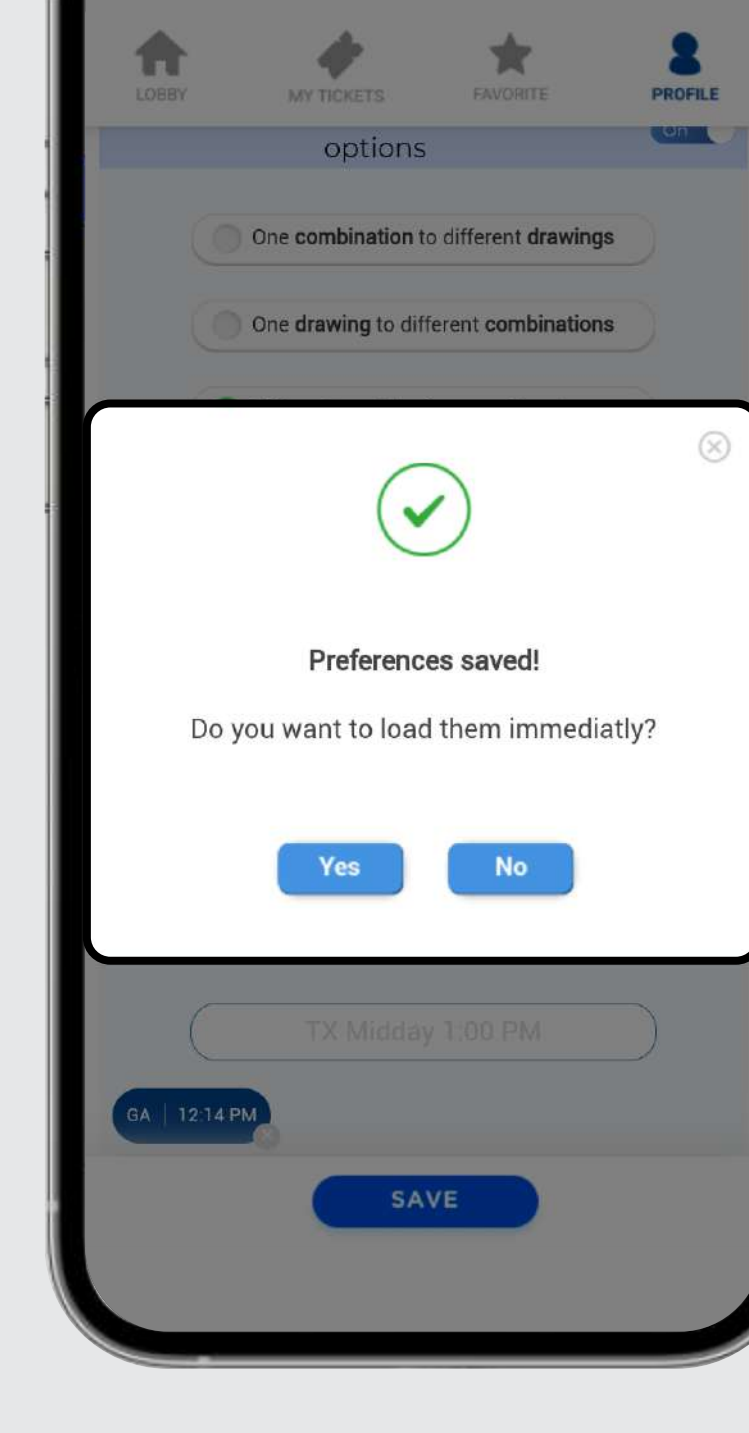
### 6. Choose which amount you prefer to have as default once you launch it.

Choose which amount you prefer to have as default once you launch it.



### 7. Choose your favorite drawings to set as default once you launch it.

Choose your favorite drawings to set as default once you launch it.



Once you have personalized your profile click on **Save** and confirm the changes.

